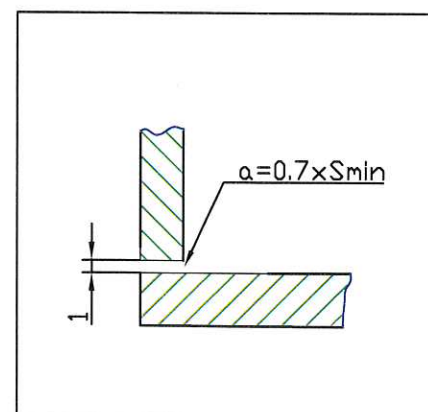
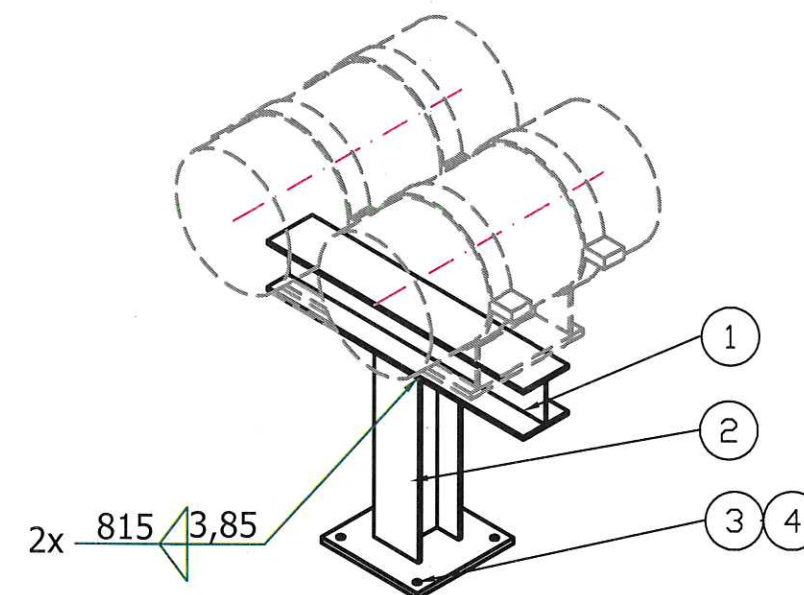


Technical drawing of a square plate with a diagonal slot and four holes. The plate has a width of 300 and a height of 300. A diagonal slot is cut from the top-left corner, labeled "4 gauri $\phi 18$ ". The slot is 30 units wide at the top-left corner and tapers to 15 units at the bottom-right corner. Four holes, each with a diameter of $\phi 18$, are located at the corners of the plate. The holes are positioned 30 units from the top and bottom edges and 30 units from the left and right edges. The top-left hole is at the intersection of the slot and the top edge. The top-right hole is at the intersection of the slot and the right edge. The bottom-left hole is at the intersection of the slot and the bottom edge. The bottom-right hole is at the intersection of the slot and the left edge.



1	Profil HEA 140	L=800mm	S235JR
2	Profil HEA 140	L=498mm	S235JR
3	PLACA 15mm	300mm x 300mmx15mm	S235JR
4	Hilti-200mm lungime	4 buc	



4

MINISTERUL ECONOMIEI ȘI FINANTELOR

VERIFICATOR DE PROIECTE
LUCRĂRI DE MONTAJ

ISPAS
LAURENȚIU
GABRIEL

Seria A
Nr. 0379

ROMÂNIA

[illegible]